

IMAGE SCANNER

How to install the Driver Software

Graphtec Corporation

About this manual

This manual explains procedure when the scanner is installed to the Windows PC. The scanner name displayed in the windows is the name of the scanner connected to the computer.

System Requirements

You can use the driver software in the following OS.

For 32bit OS

Windows XP Professional/Home Edition

Windows Vista Ultimate/Business/Home Premium/Home Basic

Windows 7 Ultimate/Enterprise/Professional/Home Premium

For 64bit OS

Windows XP Professional

Windows Vista Ultimate/Business/Home Premium/Home Basic

Windows 7 Ultimate/Enterprise/Professional/Home Premium

Checkpoint

The procedure outlined below is based on the requirement that you are logged on to Windows with **administrator** rights. Consult your Windows manual and Windows Help for more information.

There are **the 32bitOS driver software** and **the 64bitOS driver software**. Please check before installation.

After the driver software is pre-installed, the scanner is connected to the computer. Do not connect the scanner yet to the computer.

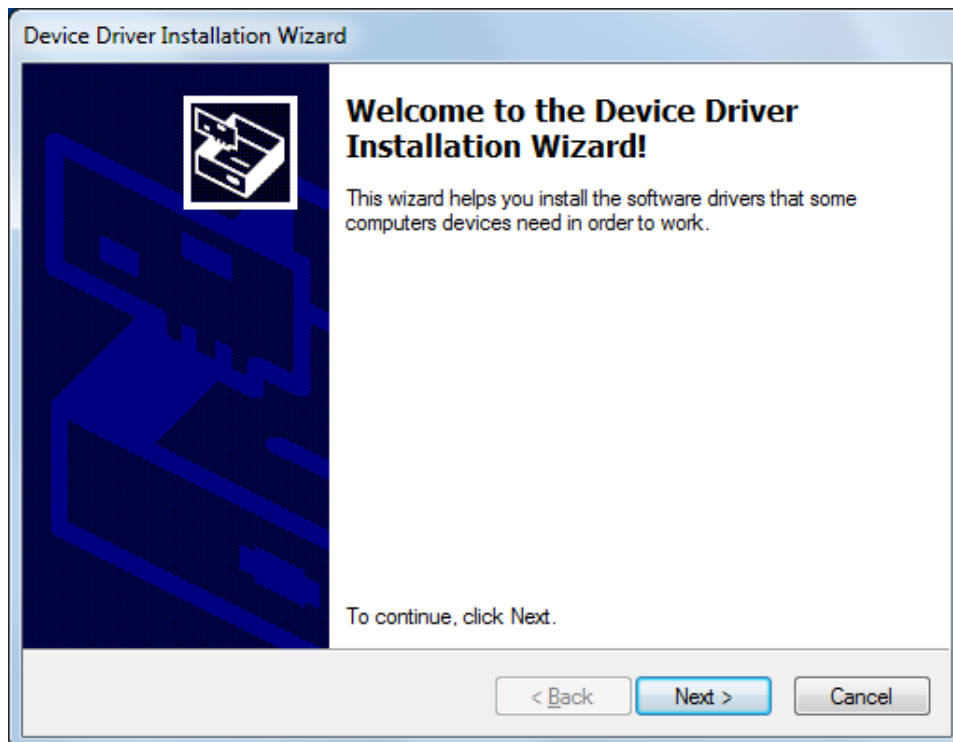
Supplement

The driver software can be installed in the steps in the past. (However, we recommend following the installation instructions in this manual.)

You can uninstall the driver software that is installed according to this instructions using "Uninstall a program"(In XP, "Add or Remove Programs") as normal applications.

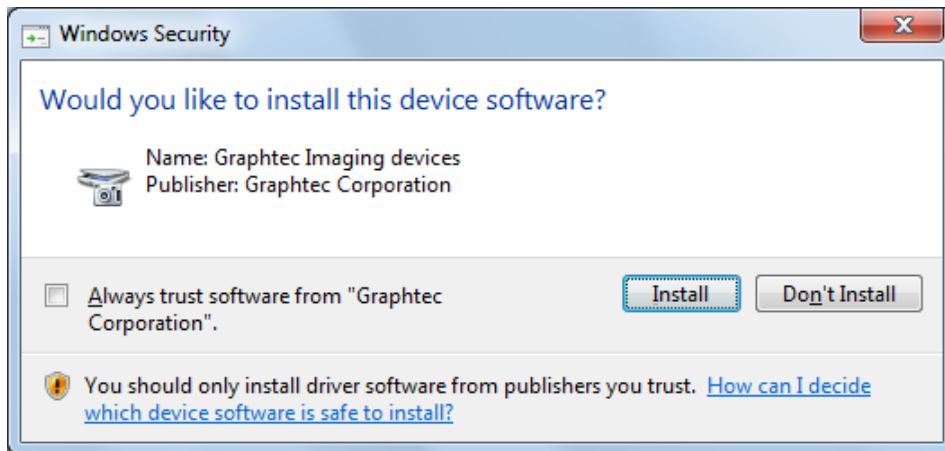
For Windows 7

1. Turn on the computer. (Do not connect the scanner yet.)
2. Run the following files in the folder that contains the driver software set.
32bitOS : DRIVER¥32bit¥**DPInst.exe**
64bitOS : DRIVER¥64bit¥**DPInst.exe**
3. The User Account Control screen is displayed. Click [Yes] to proceed with the installation.
4. The screen shown below appears. Click the [Next] button.

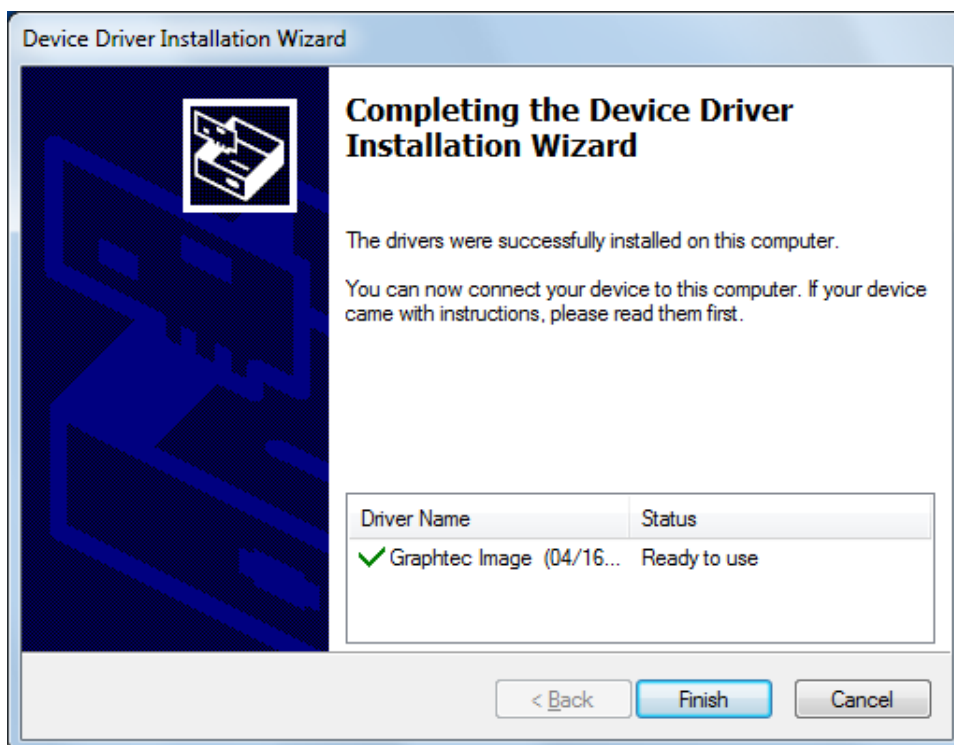


Scanner Driver Installing Guide

5. The screen shown below is displayed. Click [Install] to proceed with the installation.

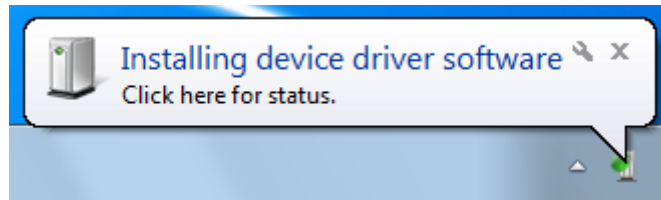


6. The screen shown below is displayed when the wizard has finished installing the driver. Click the [Finish] button to close the "Device Driver Installation Wizard".

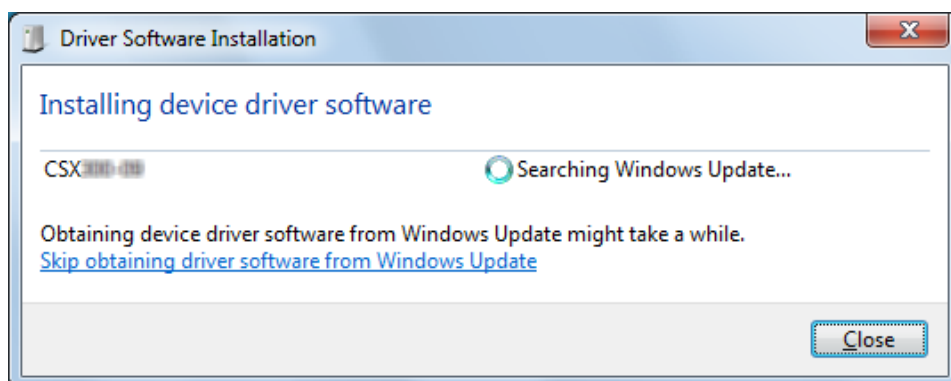


7. Turn on the scanner, and then the scanner connects to the computer.

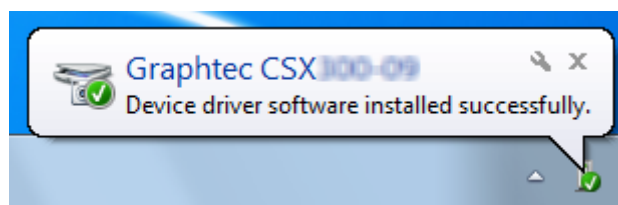
8. The following message appears on the taskbar when you connects to the scanner. Wait for the driver installation is finished. (It may take several minutes.)



- ※ If the computer is not connected to the network, changes to the message on [8] immediately after completing the installation.
- ※ If the computer is connected to the network, this message may disappear during the installation. In this case, wait for until the message on [9] appears.
- ※ The following screen appears when you click the message. If you select the "Skip obtaining driver software from Windows Update" link, the installation is terminated early.

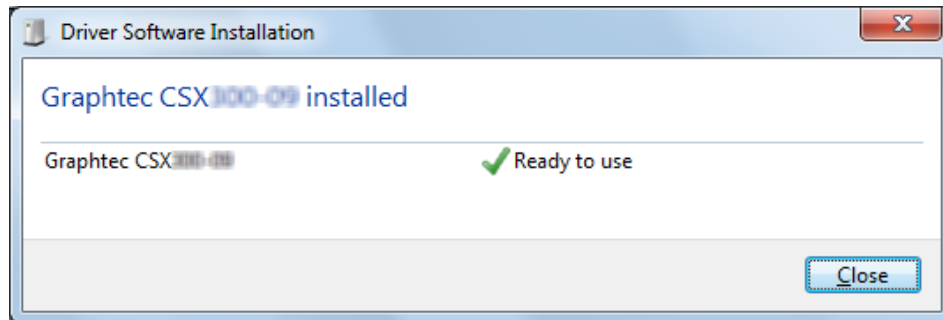


9. The following message appears on the taskbar when the driver installation is finished.

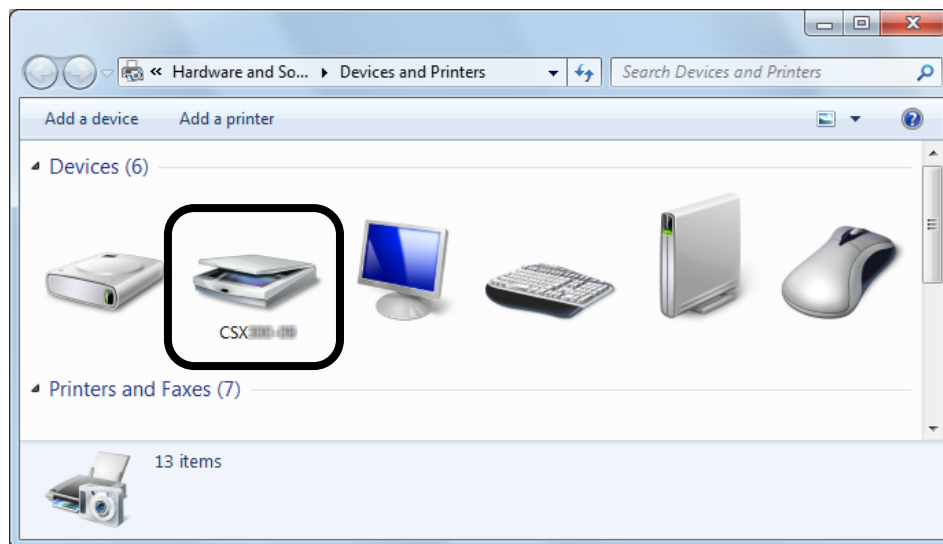


- ※ If the message by clicking in the taskbar on [8], the following message appears on the taskbar when the driver installation is finished.

Scanner Driver Installing Guide



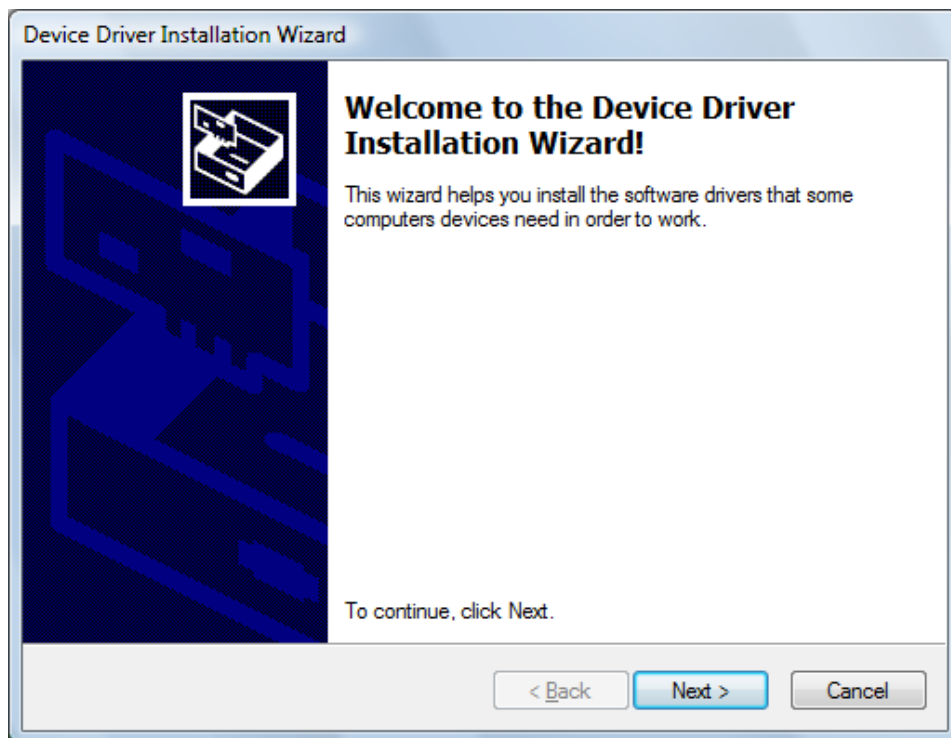
10. Select "Devices and Printers" using the [Start] menu on the Windows desktop to display the screen shown below. Check that connected scanner is displayed here.



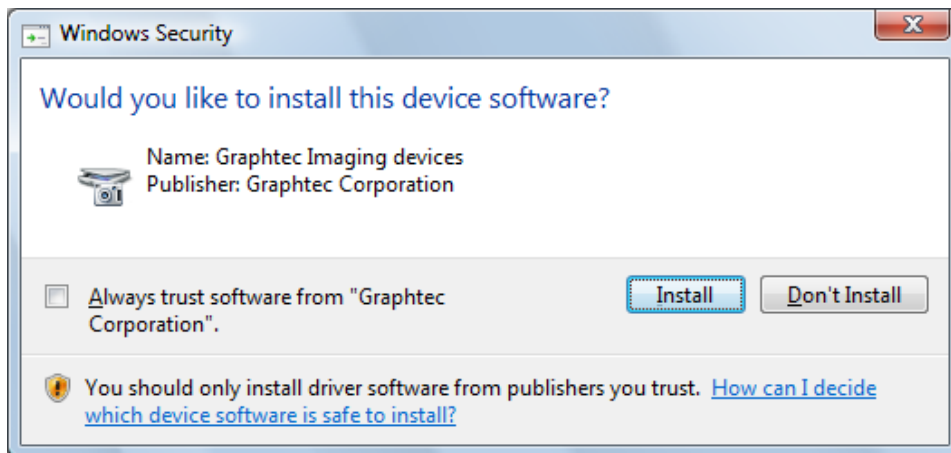
The installation of driver software is complete.

For Windows Vista

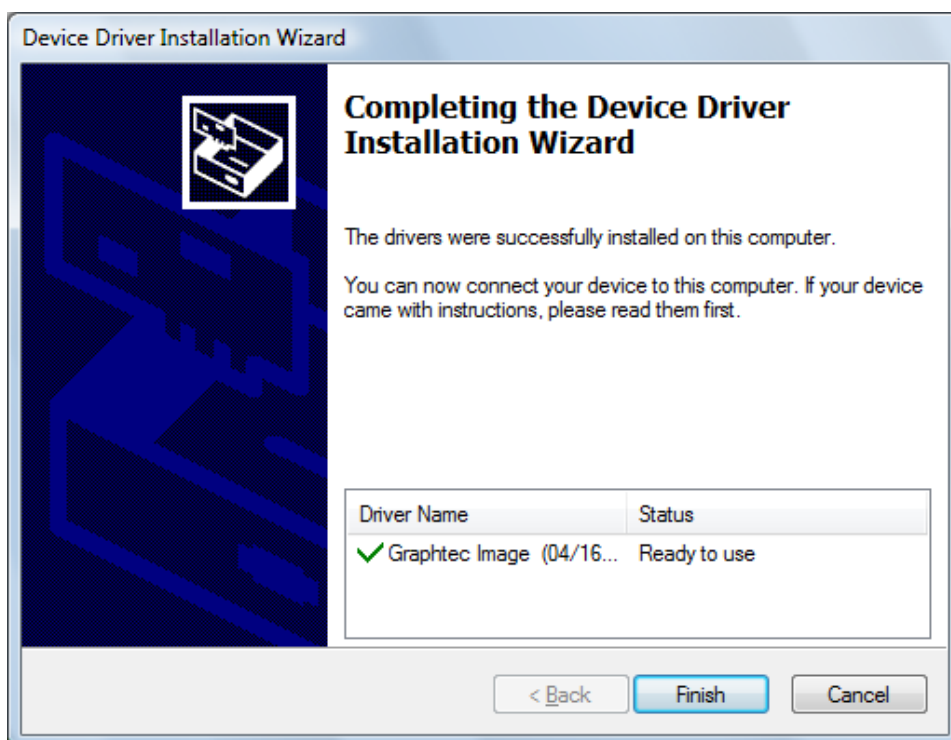
1. Turn on the computer. (Do not connect the scanner yet.)
2. Run the following files in the folder that contains the driver software set.
32bitOS : DRIVER¥32bit¥**DPInst.exe**
64bitOS : DRIVER¥64bit¥**DPInst.exe**
3. The User Account Control screen is displayed. Click [Continue] to proceed with the installation.
4. The screen shown below appears. Click the [Next] button.



5. The screen shown below is displayed. Click [Install] to proceed with the installation.

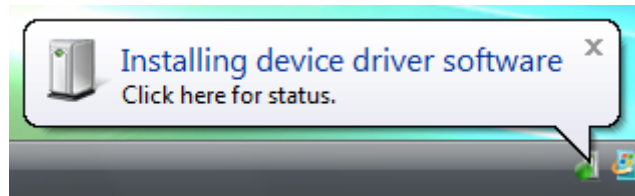


6. The screen shown below is displayed when the wizard has finished installing the driver. Click the [Finish] button to close the "Device Driver Installation Wizard".

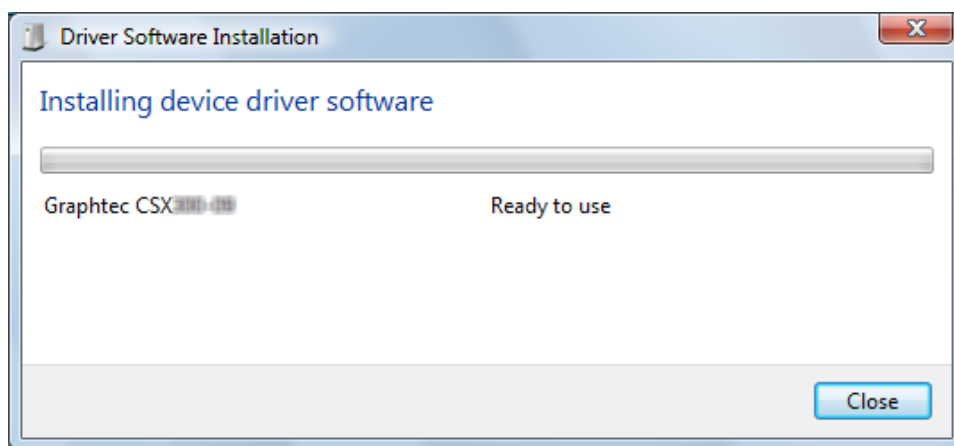


7. Turn on the scanner, and then the scanner connects to the computer.

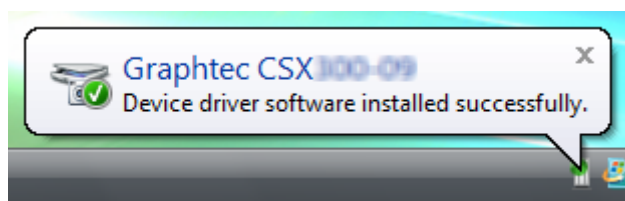
8. The following message appears on the taskbar when you connects to the scanner. Wait for the driver installation is finished.



- ※ The following screen appears when you click the message.

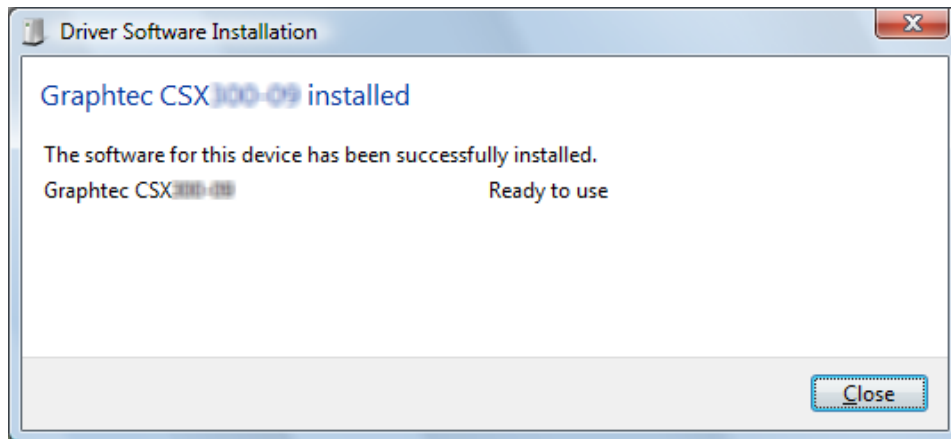


9. The following message appears on the taskbar when the driver installation is finished.

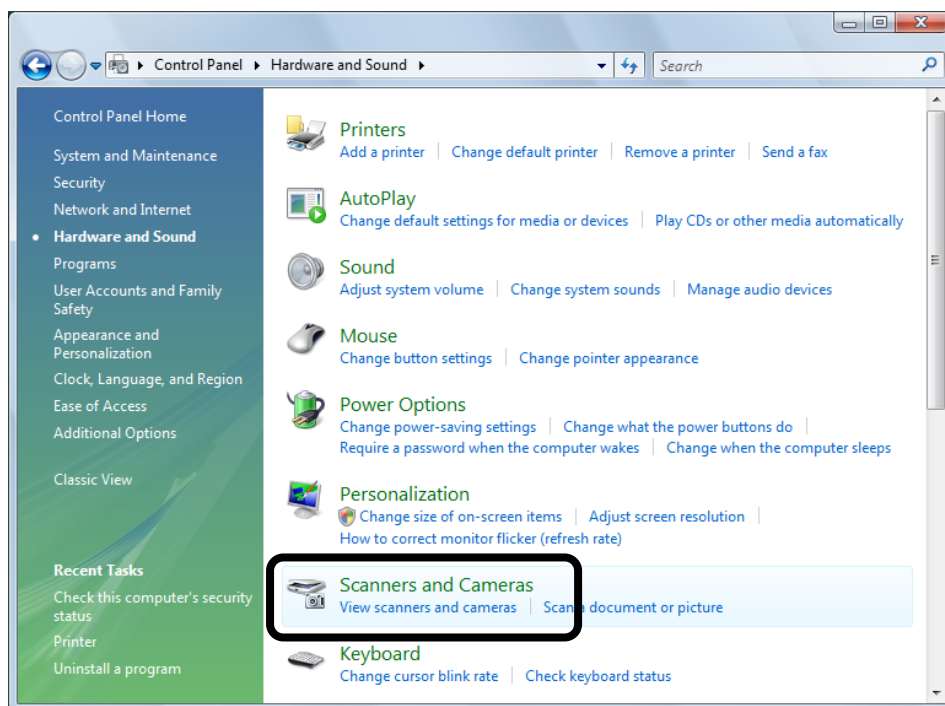


- ※ If the message by clicking in the taskbar on [8], the following message appears on the taskbar when the driver installation is finished.

Scanner Driver Installing Guide

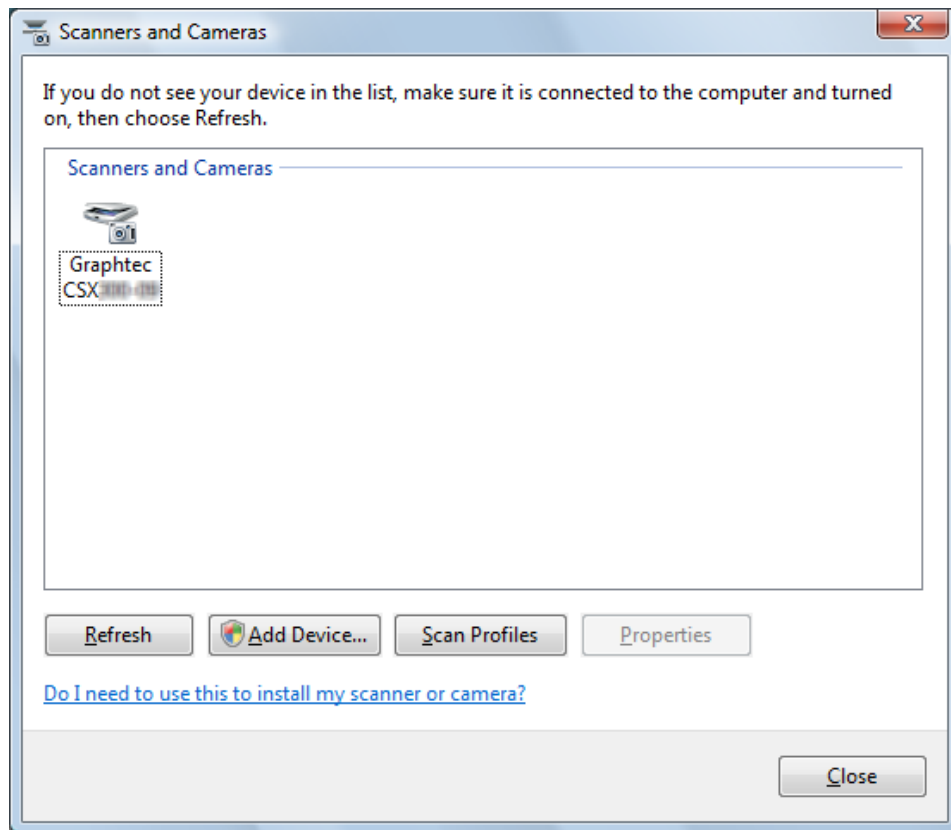


- 1 0 . Launch the Control Panel using the [Start] menu on the Windows desktop.
- 1 1 . Click "Hardware and Sound" to display the screen shown below.



Scanner Driver Installing Guide

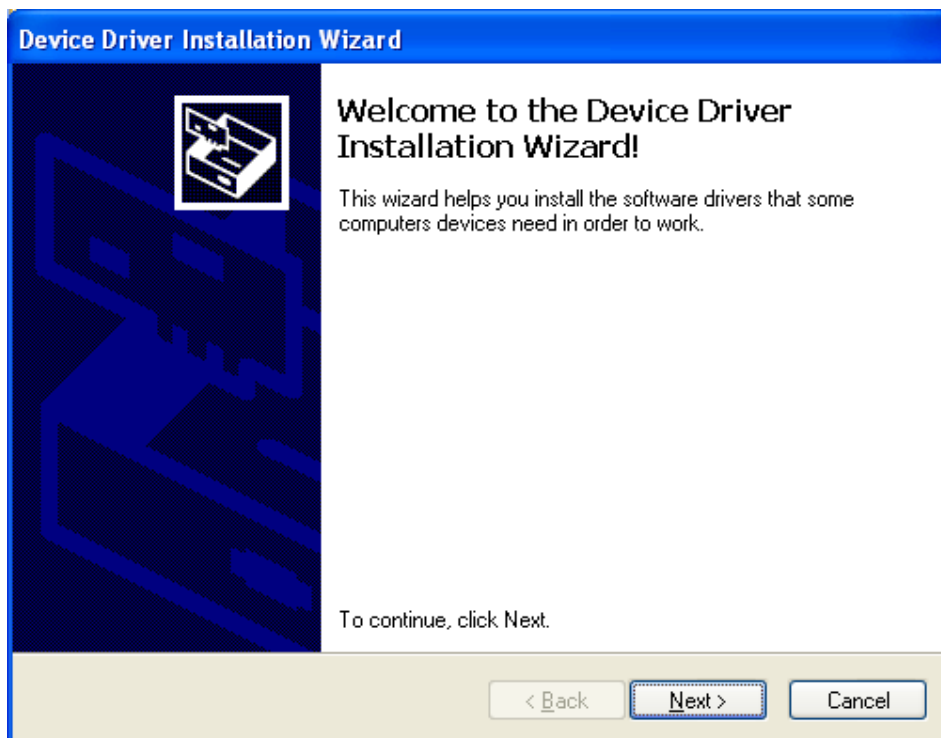
2. Click "Scanners and Cameras" to display the screen shown below. Check that connected scanner is displayed here.



The installation of driver software is complete.

For Windows XP

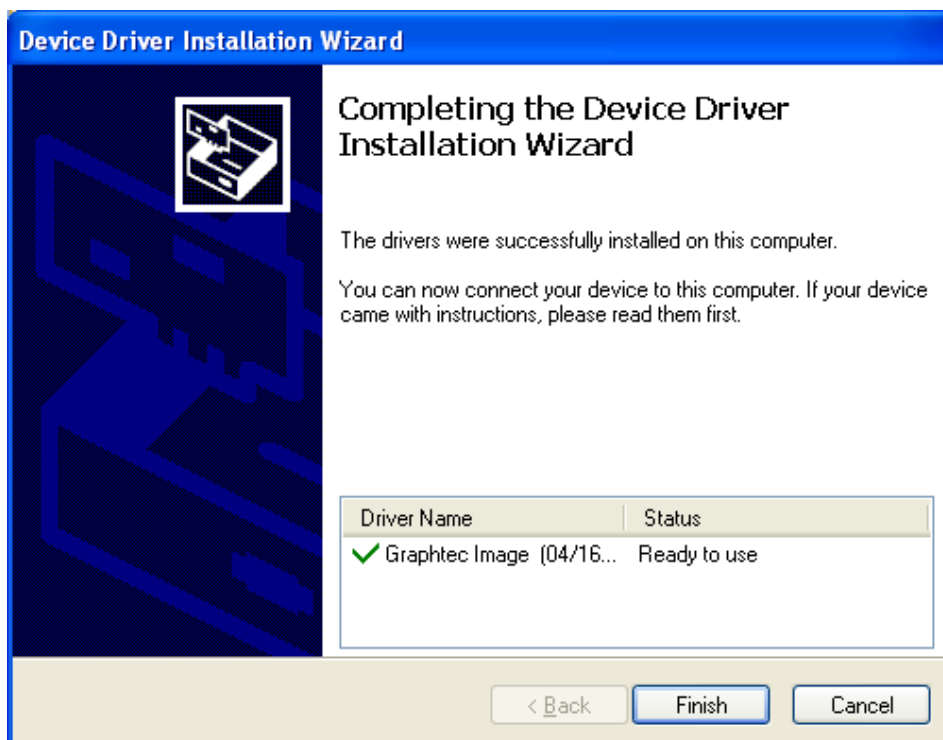
1. Turn on the computer. (Do not connect the scanner yet.)
2. Run the following files in the folder that contains the driver software set.
32bitOS : DRIVER¥32bit¥**DPInst.exe**
64bitOS : DRIVER¥64bit¥**DPInst.exe**
3. The screen shown below appears. Click the [Next] button.



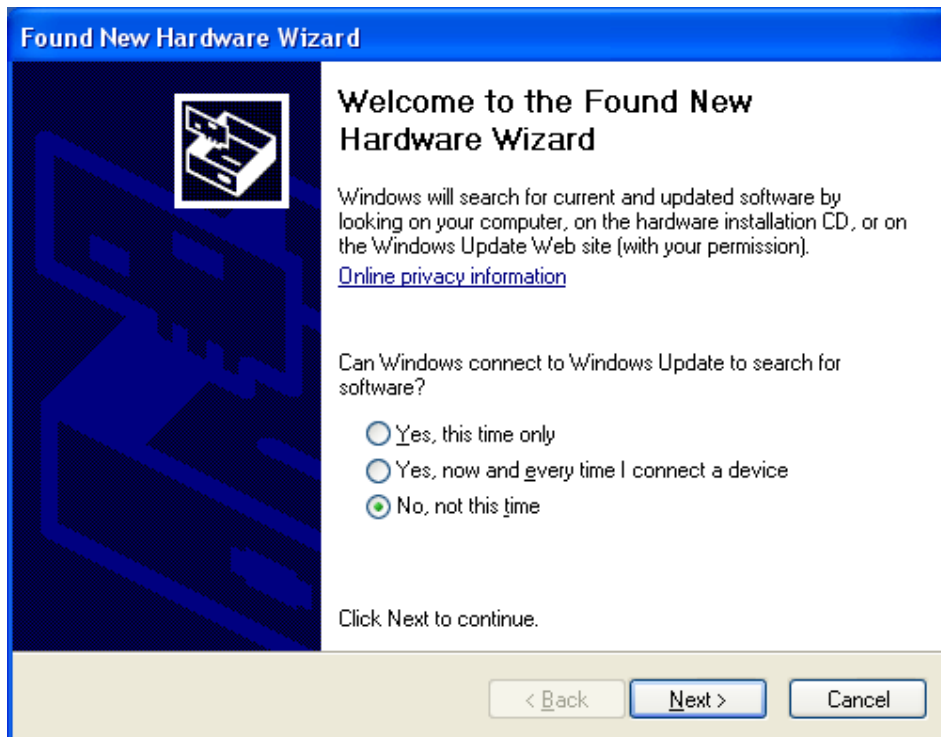
4. The screen shown below is displayed. Read the explanation and make sure that you understand the contents. To continue the installation, click [Continue Anyway].



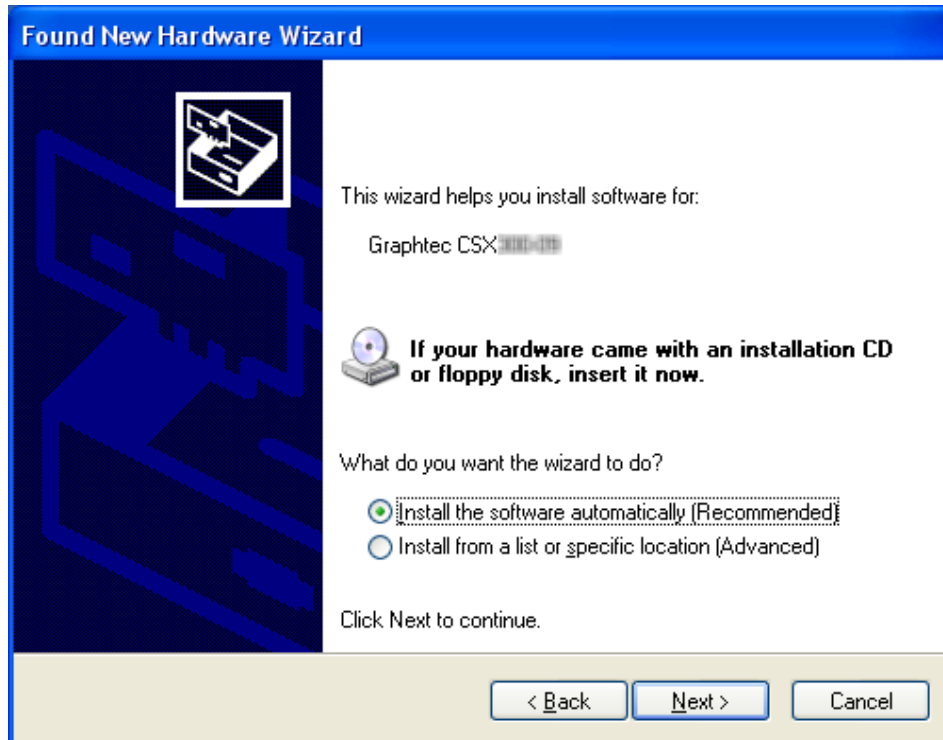
5. The screen shown below is displayed when the wizard has finished installing the driver. Click the [Finish] button to close the "Device Driver Installation Wizard".



6. Turn on the scanner, and then the scanner connects to the computer.
7. When the following screen appears, Select the option “No, not this time” and then click [Next]. (When Service Pack2 or later has been installed, the following screen may appears.)



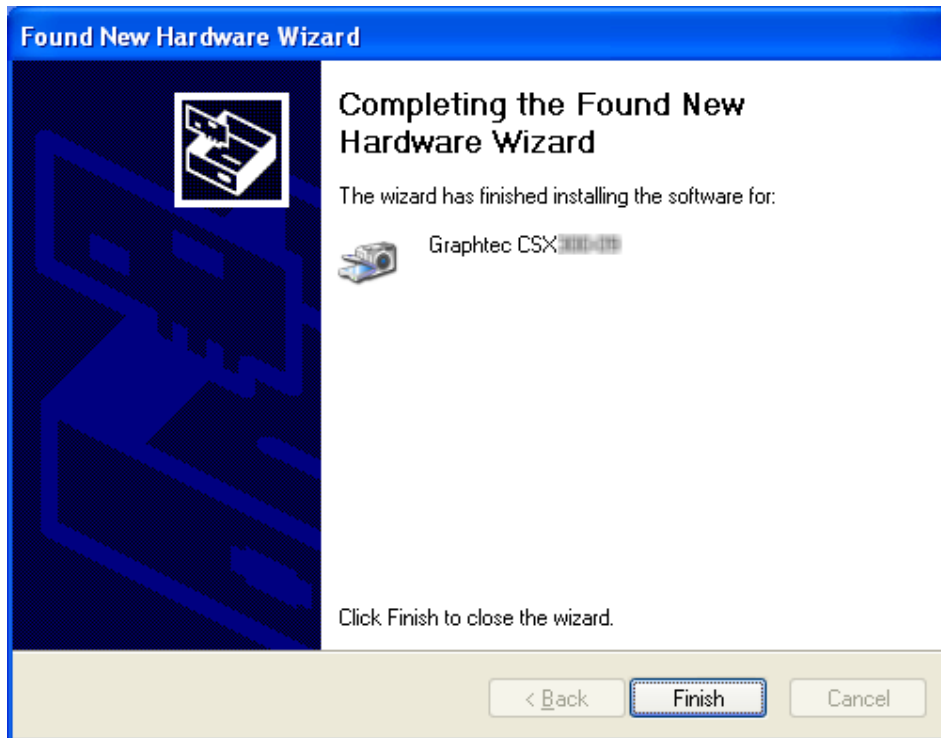
8. The following screen appears. Select the option “Install the software automatically (Recommended).” and then click [Next].



9. The screen shown below is displayed. Read the explanation and make sure that you understand the contents. To continue the installation, click [Continue Anyway].

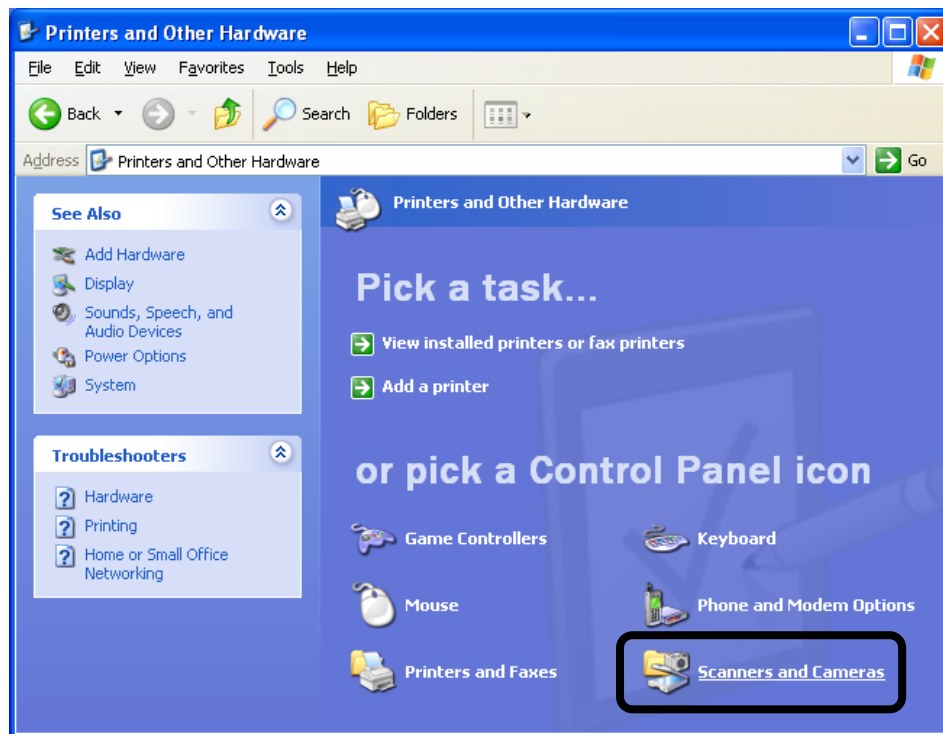


- 1 0 . The screen shown below is displayed when the wizard has finished installing the driver. Click the [Finish] button to close the “Welcome to the Found New Hardware” wizard.



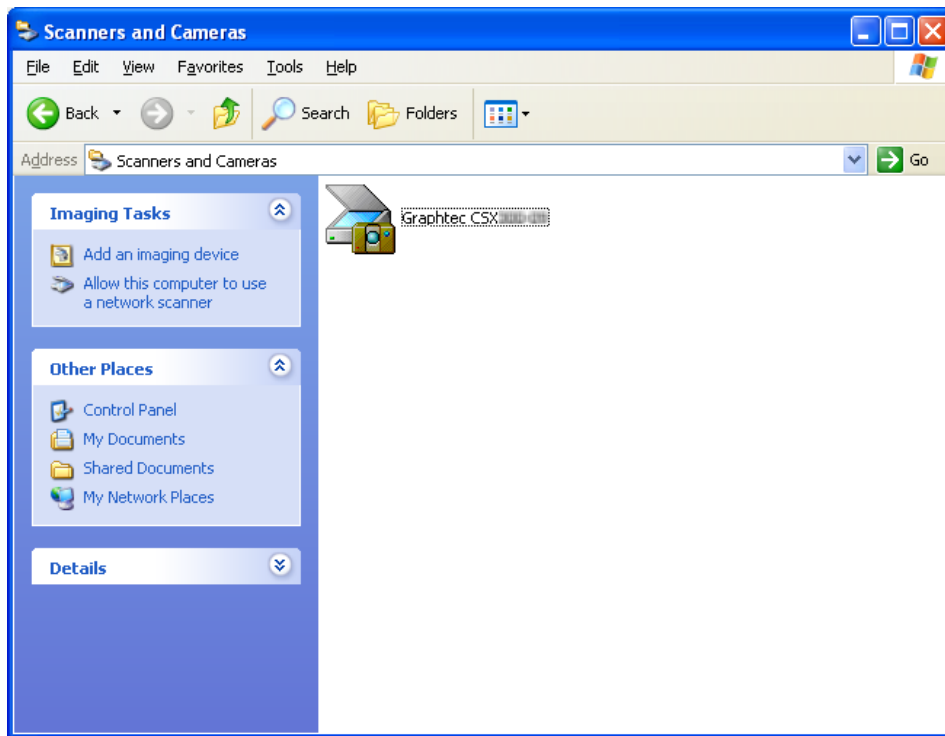
- 1 1 . Launch the Control Panel using the [Start] menu on the Windows desktop.

- 1 2. The screen shown below is displayed when you click on the “Printers and Other Hardware” icon.



Scanner Driver Installing Guide

- 1 3. The screen shown below is displayed when you click on the “Scanners and Cameras” icon. Check that connected scanner is displayed here.



The installation of driver software is complete.

END